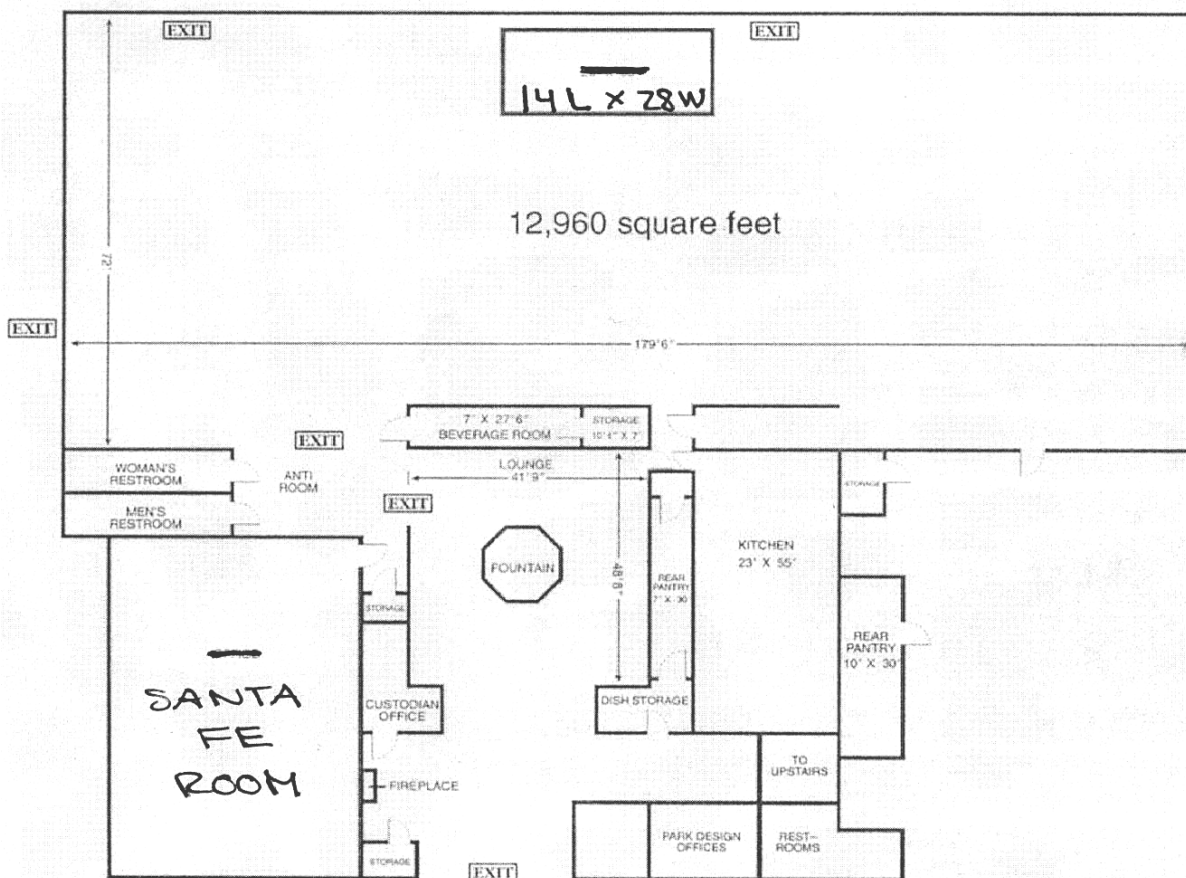


City of San Diego Park & Recreation Department

Balboa Park Palisades Area – Balboa Park Club



CAPACITY: 450 dinner set-up
700 theatre set-up

TABLE CAPACITY: 75

Facilities: Kitchen space available with sink and running water. Fountain in foyer does not work. Platform in ballroom and piano on platform may not be moved. Storage rooms are not available.

Alcohol regulations: Security guards (one for each 100 people).
Alcohol served by licensed caterer or professional bartender.
A permit issued by the Alcoholic Beverage Commission may be required.

The exits may not be blocked at any time.