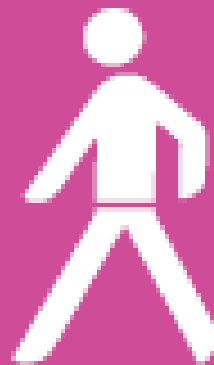




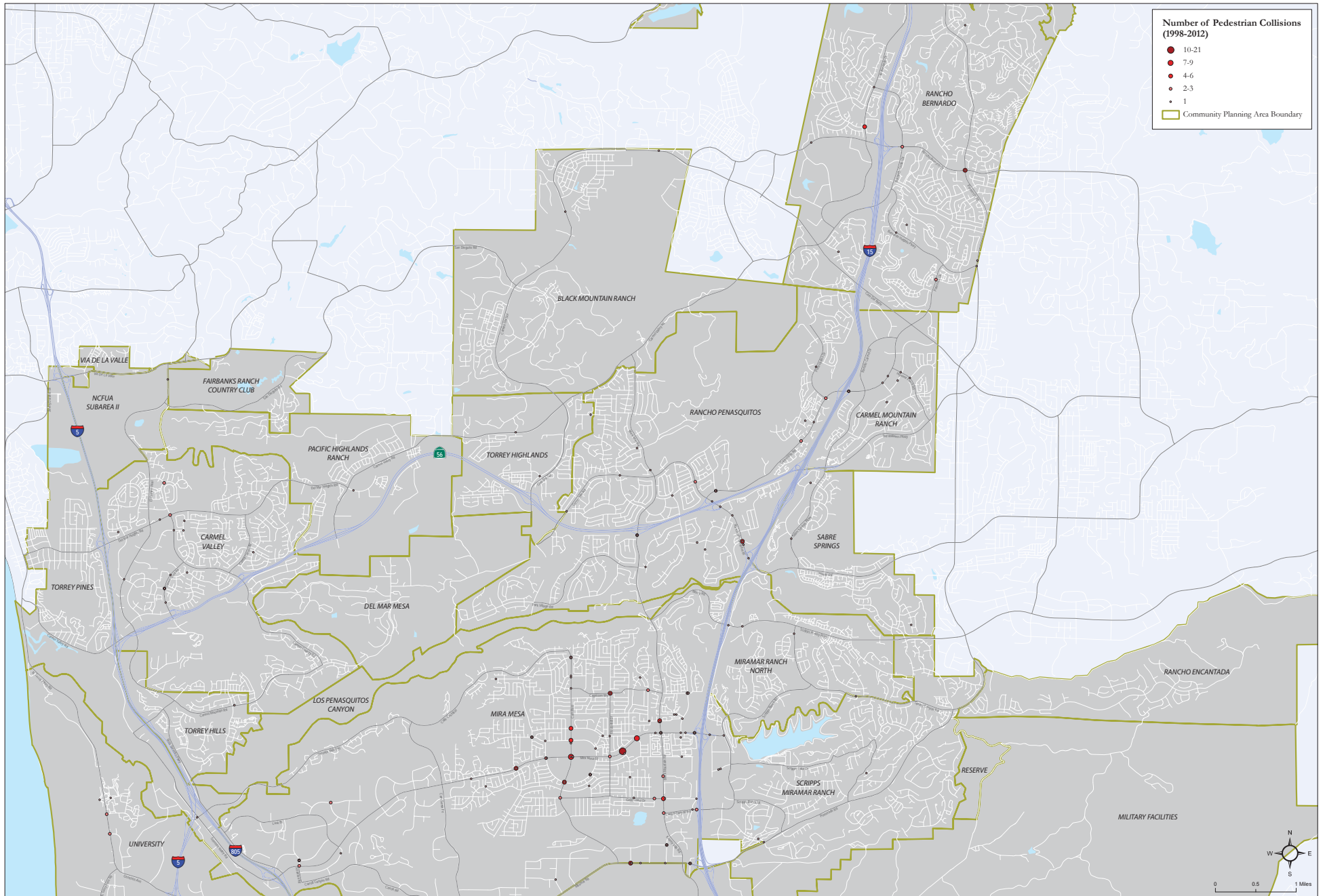
Station 2

Trends in Citywide Pedestrian Collisions



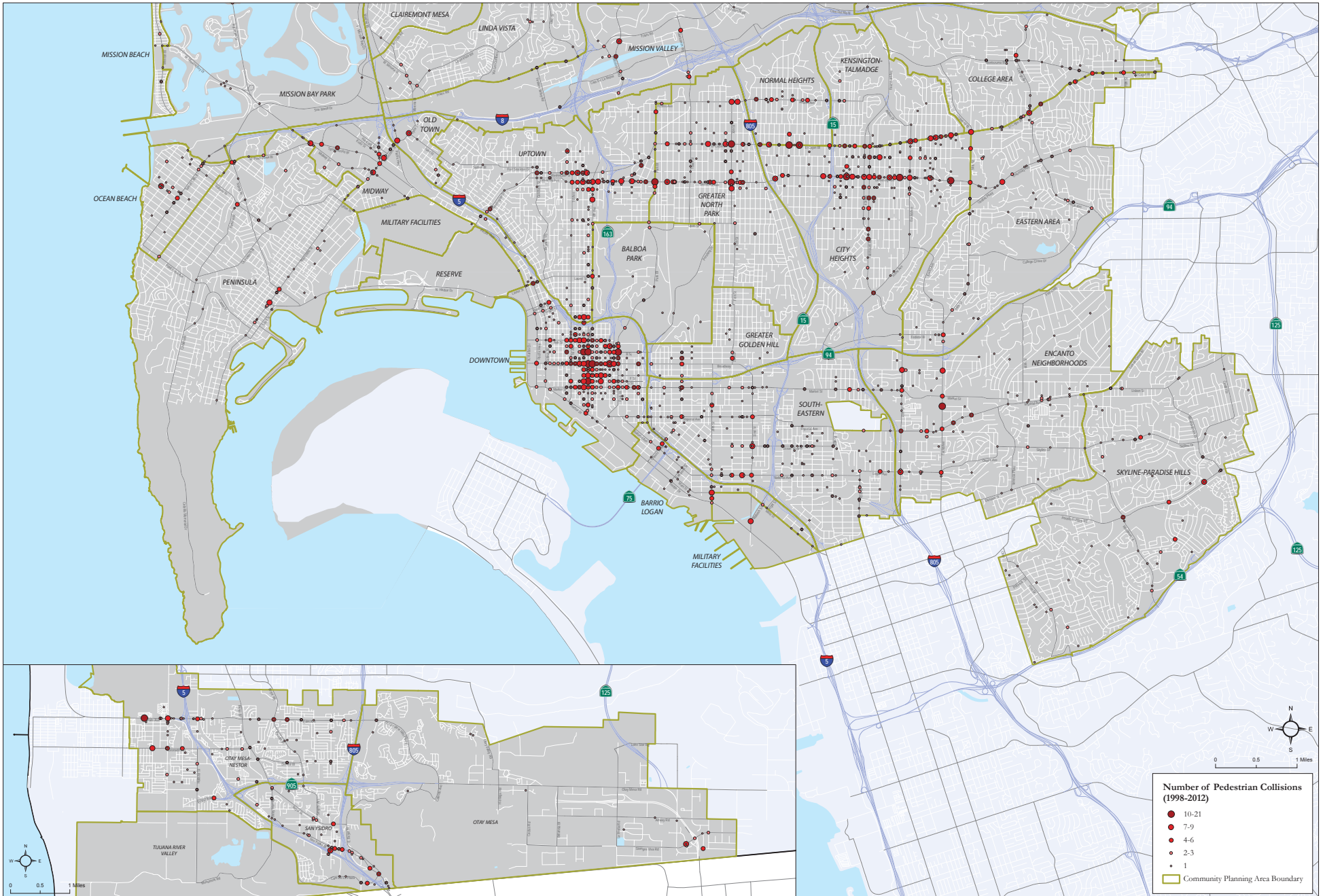


Pedestrian Collisions in Northern San Diego (1998-2012)



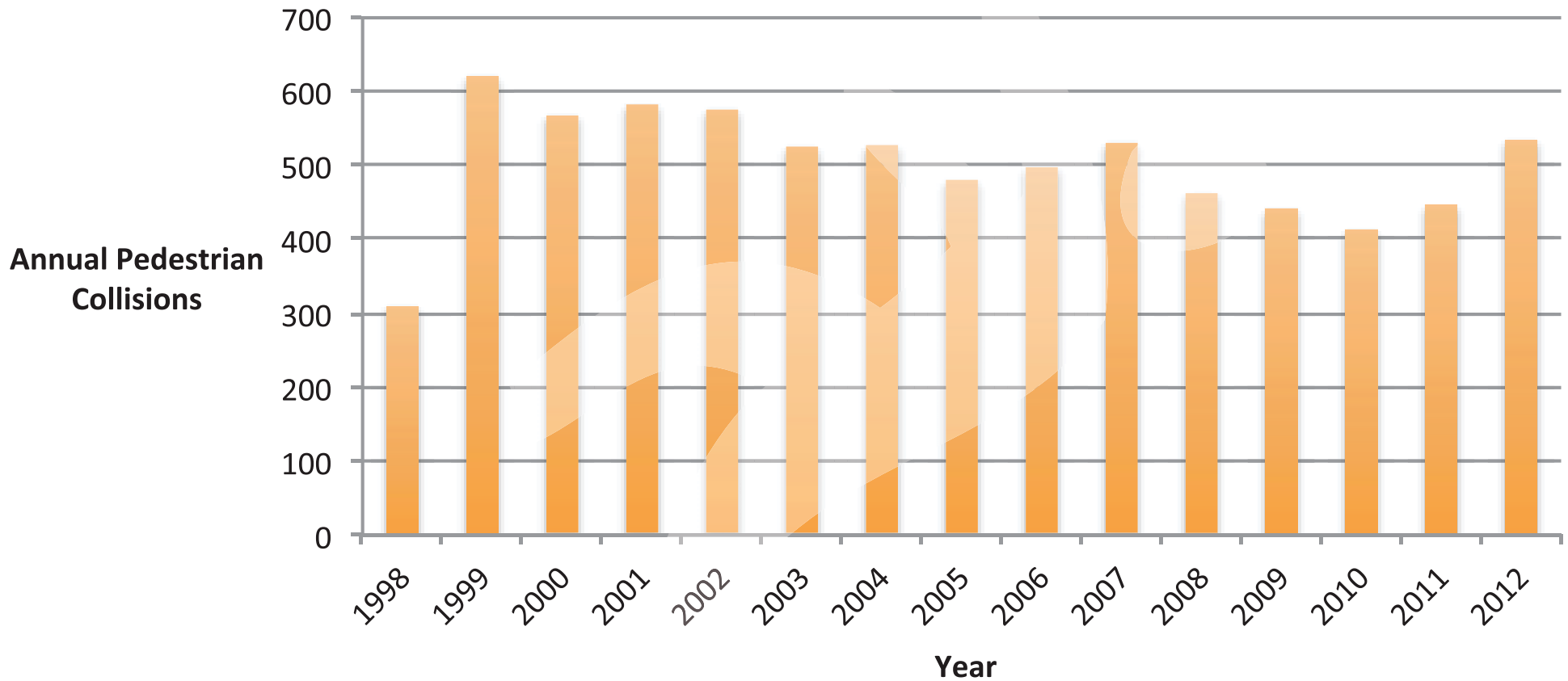


Pedestrian Collisions in Southern San Diego (1998-2012)





Citywide Pedestrian Collisions by Year (1998-2012)



Source: Chen Ryan Associates, October 2013



Citywide Pedestrian Collisions by Year (1998-2012)



Year	Total Pedestrian Collisions	% Change by Year	Number of Injuries ¹	Number of Fatalities	% of Collisions Resulting in Fatality
1998	309	-	300	24	7.8%
1999	620	+100.6%	631	30	4.8%
2000	567	-8.5%	578	21	3.7%
2001	582	+2.6%	589	16	2.7%
2002	575	-1.2%	576	26	4.5%
2003	525	-8.7%	520	20	3.8%
2004	527	0.4%	544	19	3.6%
2005	480	-8.9%	468	17	3.5%
2006	497	+3.5%	474	20	4.0%
2007	530	+6.6%	519	11	2.1%
2008	462	-12.8%	445	14	3.0%
2009	441	-4.5%	433	16	3.6%
2010	413	-6.3%	420	16	3.9%
2011	446	+8.0%	460	11	2.5%
2012	534	+19.7%	525	23	4.3%
Total	7,508		7,482	284	3.8%

Source: Chen Ryan Associates, October 2013

Notes:

1. Number of injuries can exceed the total collisions since more than one injury can occur during a single collision.



Pedestrian Collision Rates by Community Planning Area (CPA)



CPA	2010 Population	% of Total Citywide Population	Total Collisions: (1998 - 2012)	% of Total Citywide Collisions	Collisions per 1,000 Residents by CPA	% Difference (CPA to Citywide Collision Rate)
Old Town	834	0.1%	36	0.5%	43	+594%
Mira Mesa	7,259	0.6%	271	3.6%	37	+500%
Midway Pacific Hwy Corridor	4,628	0.4%	163	2.1%	35	+466%
Tijuana River Valley	64	0.0%	2	0.0%	31	+402%
Downtown/Centre City	31,494	2.6%	847	11.2%	27	+332%
North City Future Urbanizing Area II	101	0.0%	2	0.0%	20	+218%
Barrio Logan	4,865	0.4%	91	1.2%	19	+201%
Kearny Mesa	5,665	0.5%	102	1.3%	18	+190%
Mission Beach	4,704	0.4%	57	0.8%	12	+95%
Pacific Beach	40,302	3.3%	458	6.0%	11	+83%
City Heights	74,062	6.1%	831	11.0%	11	+80%
Kensington-Talmadge	14,063	1.2%	151	2.0%	11	+73%
Uptown	37,612	3.1%	403	5.3%	11	+72%
San Pasqual Valley	195	0.0%	2	0.0%	10	+65%
Southeastern San Diego	56,757	4.7%	482	6.4%	8	+37%
North Park	45,728	3.7%	385	5.1%	8	+35%
Normal Heights	15,747	1.3%	131	1.7%	8	+34%
Ocean Beach	13,584	1.1%	112	1.5%	8	+33%
Encanto	47,361	3.9%	331	4.4%	7	+12%
College Area	20,504	1.7%	138	1.8%	7	+8%
Eastern Area	37,431	3.1%	251	3.3%	7	+8%
San Ysidro	28,008	2.3%	176	2.3%	6	+1%
La Jolla	29,655	2.4%	185	2.4%	6	0%
Mission Valley	18,849	1.5%	108	1.4%	6	-8%
Linda Vista	31,599	2.6%	151	2.0%	5	-23%
Greater Golden Hill	15,848	1.3%	73	1.0%	5	-26%
Otay Mesa-Nestor	60,809	5.0%	254	3.3%	4	-33%
Peninsula	39,688	3.3%	153	2.0%	4	-38%
Clairemont Mesa	77,922	6.4%	299	3.9%	4	-38%
Otay Mesa	15,001	1.2%	43	0.6%	3	-54%
University	62,731	5.1%	179	2.4%	3	-54%
Serra Mesa	21,698	1.8%	61	0.8%	3	-55%
Skyline Paradise Hills	67,089	5.5%	188	2.5%	3	-55%
Navajo	48,335	4.0%	118	1.6%	2	-61%
Carmel Mountain Ranch	12,976	1.1%	26	0.3%	2	-68%
Fairbanks Ranch Country Club	1,037	0.1%	2	0.0%	2	-69%
Tierrasanta	30,332	2.5%	53	0.7%	2	-72%
Torrey Pines	6,595	0.5%	11	0.1%	2	-73%
Rancho Peñasquitos	43,682	3.6%	62	0.8%	1	-77%
Rancho Bernardo	39,197	3.2%	53	0.7%	1	-78%
Scripps Miramar Ranch	19,554	1.6%	24	0.3%	1	-80%
Miramar Ranch North	12,650	1.0%	15	0.2%	1	-81%
Carmel Valley	33,844	2.8%	39	0.5%	1	-81%
Pacific Highlands Ranch	5,134	0.4%	4	0.1%	1	-87%
Black Mountain Ranch	6,517	0.5%	5	0.1%	1	-88%
Sabre Springs	10,757	0.9%	7	0.1%	1	-90%
Torrey Highlands	6,875	0.6%	3	0.0%	0	-93%
Torrey Hills	7,157	0.6%	2	0.0%	0	-96%
Del Mar Mesa	978	0.1%	0	0.0%	0	-100%
Rancho Encantada	2,148	0.2%	0	0.0%	0	-100%
Via de la Valle	423	0.0%	0	0.0%	0	-100%
Citywide	1,220,248	100.0%	7,589	100.0%	6	

Notes:

1. Collisions that occur on the border of two CPAs may be counted more than once.

Source: Chen Ryan Associates, October 2013